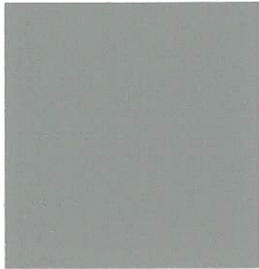


CHROMIX® G and L Admixtures

for Color-Conditioned® Concrete



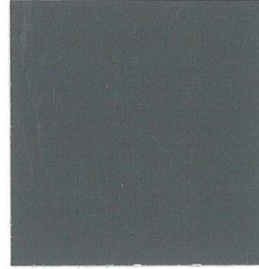
C-10 Cool Gray



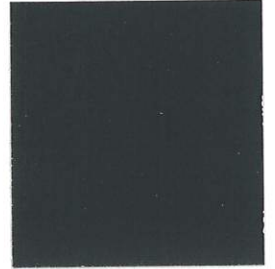
C-284 Landmarks Gray



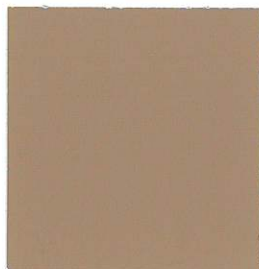
C-2436 Flint



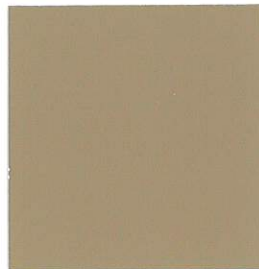
C-24 Charcoal



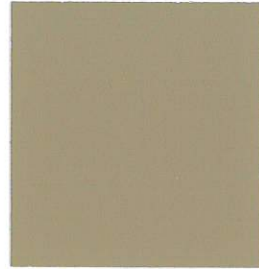
C-34 Dark Gray



C-2636 Pecan



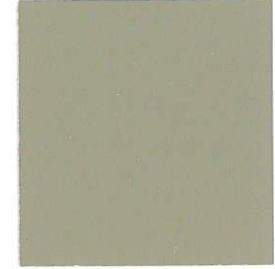
C-21 Adobe Tan



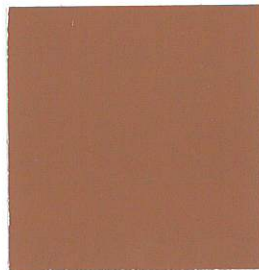
C-15 Coachella Sand



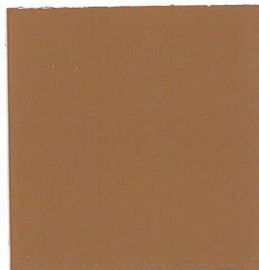
C-11 Desert Sand



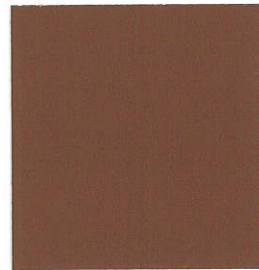
C-16 Winter Beige



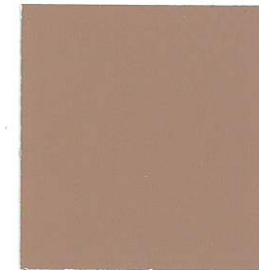
C-36 Sorrento Red



C-3260 Etruscan Tile



C-38 Burnt Red



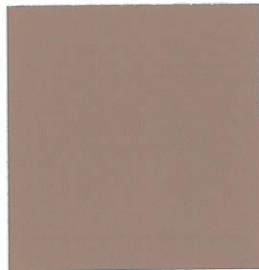
C-1530 Miami Beach Red



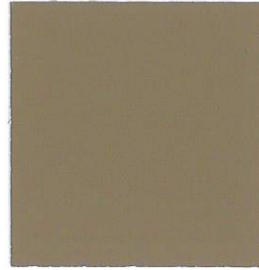
C-37 Sunbaked Clay



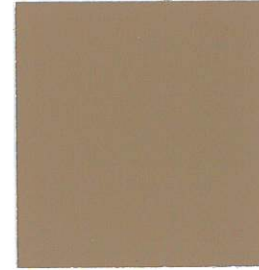
C-27 Westwood Brown



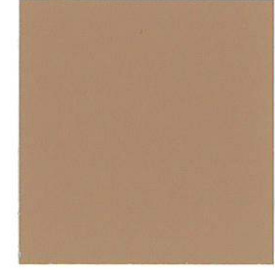
C-2136 Durango Brown



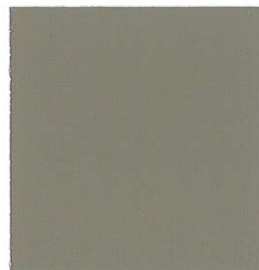
C-30 Brownstone



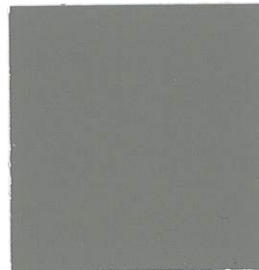
C-359 Barcelona Brown



C-26 Antique Cork



C-3150 Bark



C-14 French Gray

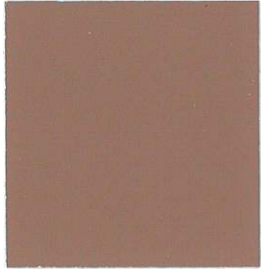
Both CHROMIX® G and CHROMIX® L Admixtures for Color-Conditioned® Concrete add color that is weather resistant, UV stable, lightfast, and alkali resistant. They contain no materials that initiate, accelerate, or promote the corrosion of steel, coated metal, plastic, or rubber concrete reinforcements. CHROMIX® G and CHROMIX® L Admixtures for Color-Conditioned® Concrete will not migrate from standing water, and can safely color concrete fountains, pools, water features, or concrete that will be polished and encounter damp or wet environments. All pigments used conform to the requirements of ASTM C 979 Pigments for Integrally Colored Concrete.

Δ Indicates High Dosage Color

Colors shown approximate the color of broom-finished concrete flatwork made with a medium-gray cement and cured with LITHOCHROME Colorwax in the matching color. If Colorwax is not used, the concrete color will not be as vibrant as shown.

Concrete should be batched and placed in accordance with Tech-Data Bulletins.

Concrete color is altered by many factors, including cement and aggregate color, slump, finishing practices, and curing method. Using the contemplated materials and construction techniques, representative samples should be cast for approval, especially when exact color matching is important.



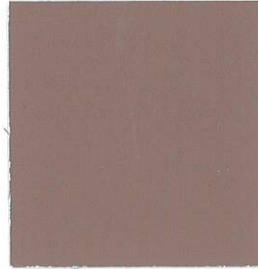
C-3650 Navajo Red



C-3760 Roman Tile



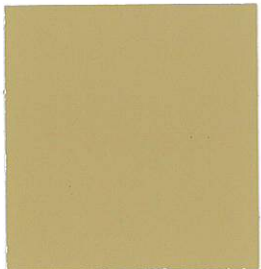
C-3250 Chicory Spice



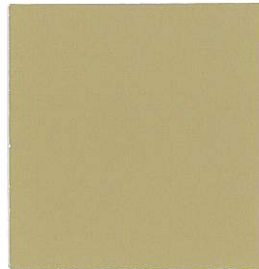
C-3450 Musky Mulberry



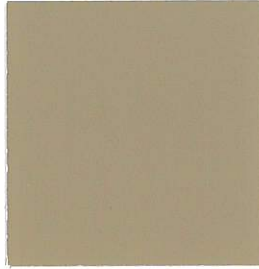
C-2836 Smokey Plum



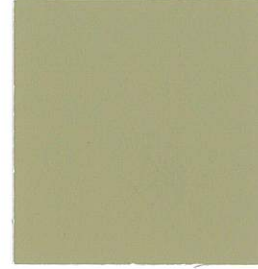
C-3245 Golden Maize



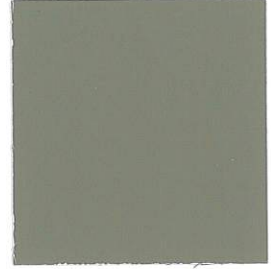
C-2536 Mesa Buff



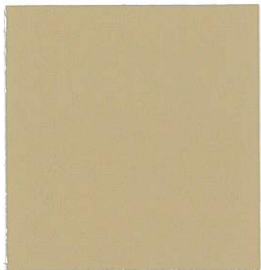
C-2736 San Diego Buff



C-2236 Fennel



C-2934 Covert Green **Δ**



C-25 Sombrero Buff



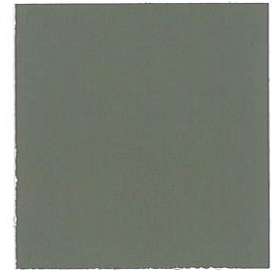
C-135 Summer Beige



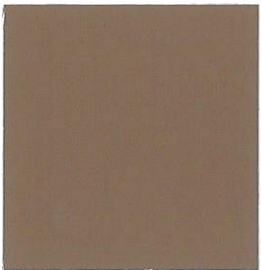
C-18 Spring Beige



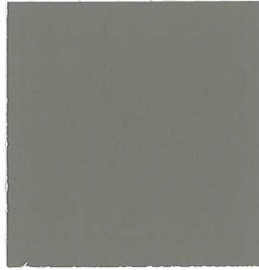
C-235 Autumn Beige



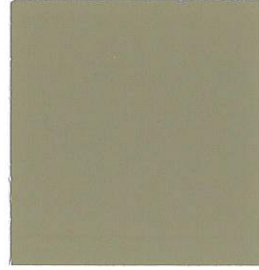
C-4280 Shadow Gray **Δ**



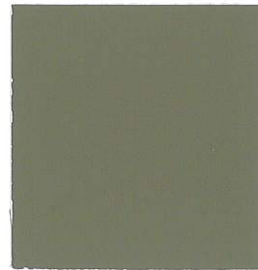
C-3849 Carob Brown **Δ**



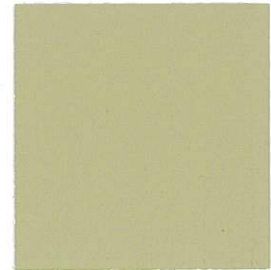
C-4570 Sudan Brown **Δ**



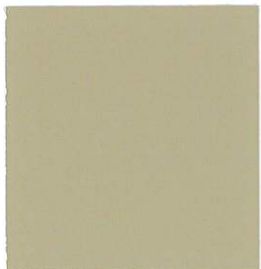
C-3145 Carlsbad Canyon **Δ**



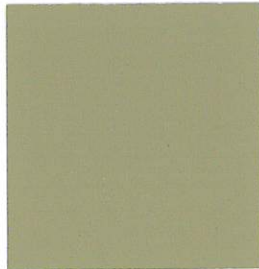
C-6000 Shale Green **Δ**



C-20 Limestone



C-12 Mesa Beige



C-17 Earth Stone

 **SCOFIELD**

A SIKA BRAND